



Eldex® Eldex Laboratories, Inc.
 30 Executive Court
 Napa, CA 94558-6278
 USA

1. Use tools supplied with Eldex (1/8" 5/32 hex key).
2. Turn the piston stroke setting.
3. Remove liquid end from pump housing, holding the liquid end against the pump housing, in line with the break the piston. See Figure 3.
4. Remove the retainer from the liquid end, and insert the 1/8" installation tool into the liquid end through the old backup washer (if present) and piston seal using the hooked end of the tool. Remove and discard both the washer and seal. Do not scratch the walls of the piston seal gland in the liquid cylinder with the tool.
5. Inspect the piston. If the piston has scratches on the holder, it should be replaced. Also inspect for discoloration or sapphire does not clean up, the piston holder. Also inspect for present (discoloration of, or sapphire does not clean up, the piston holder).
6. Inspect the retainer. Clean the piston does not fit snugly in the retainer should be replaced.
7. Remove the piston push rod from the pump housing. Inspect for damage and clean or replace if necessary. Lubricate with oil.
8. Inspect the liquid cylinder, pay attention to scratches or irregularities will require replacement of the liquid end.
9. Clean all parts with a liquid detergent, followed by a rinse. Clean any fluid in the mechanical end of the pump.
10. Insert the installation tool into the retainer and then into the new seal backup washer (not used in 1362, 1364).

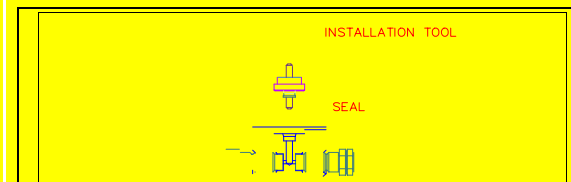


Figure 3: Piston Seal Replacement

Piston Wash System

The use of buffers or solutions which crystalize when exposed to air can lead to abrasion of the piston seal. By installing the piston wash system on your pump, you can significantly extend the life of the piston seal. The piston wash system part number is: 5575. Contact us for details at:

(800)969-3533

If there is anything we can do to help you with these instructions, or, if you have comments or suggestions, please contact us at:

(800) 969-3533.

1274	Includes five Fluoroloy G® metal-free seals and five backup washers (for PEEK pumps without groove in cylinder).
1363	Includes two GF PTFE piston seals (no backup washers are used).
1364	Includes five GF PTFE seals (no backup washers are used).
1477	Includes two Fluoroloy G metal-free seals and two backup washers (for PEEK pumps with groove in cylinder).
1478	Includes five Fluoroloy G metal-free seals and five backup washers (for PEEK pumps with groove in cylinder).

NOTE: If you retain the tools supplied with Eldex Part Nos. 1022, 1272, 1362 or 1476 you can purchase just the seals and re-use the tools.

Registered Trademarks: Fluoroloy G, Furon.